



TABLES AND SINKS

SERVING THE FOOD INDUSTRY SINCE 1951

ICE BINS AND ACCESSORIES

Ideal for restaurants and bars, Omcan's ice bins are designed to have your ice ready right when you need it! Featuring bottle holders on the side to keep your drink mixers chilled and easily accesible, these ice bins are easy to clean and perfect for ice storage.



43477 & 43478 comes with 7 Circuit Post-Mix Cold Plate

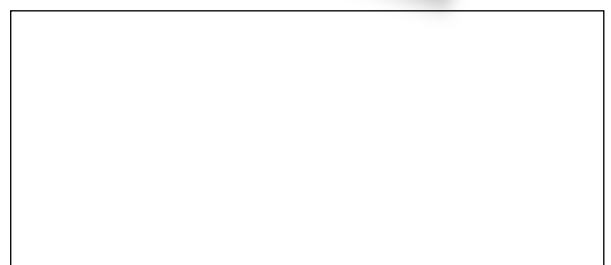


WARRANTY



SHIPPED ON PALLET

All ice bins except
item 43475



Authorized Dealer

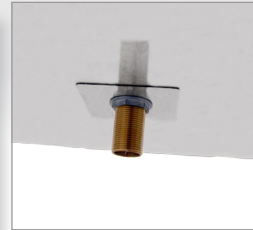
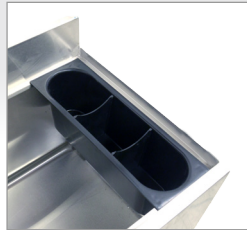
TABLES AND SINKS

24-INCH STAINLESS STEEL ICE BIN



Comes with leg brace

DETAILED IMAGES



FEATURES

- 20-gauge 304 stainless steel bowl, top, back and body
- Galvanized leg and socket, plastic bullet feet and "U" shape leg bracing
- Plastic bottle holder included
- 3" high backsplash

TECHNICAL SPECIFICATIONS

ITEM	43475
CAPACITY	77 lbs. / 34.9 kg.
BOWL SIZE	22" x 14.8" x 12" / 558.8 x 375.92 x 304.8 mm
DIMENSIONS (DWH)	24" x 18.5" x 33" / 609.6 x 469.9 x 838.2 mm
WEIGHT	56.76 lbs. / 25.7 kg.
GROSS DIMENSIONS	24" x 18" x 33" / 609.6 x 457.2 x 838.2 mm
GROSS WEIGHT	63.8 lbs. / 29 kg.

OPTIONAL ACCESSORIES



Item **44622** - Sliding Cover
Dimensions: 16.5" x 23.5"



Item **44625** - Stainless Steel Leg
Brace for 18" x 24" Ice Bins



Item **44624** - 14" Stainless
Steel Legs for Ice Bins

OMCAN INC.

Telephone: 1-800-465-0234

Fax: (905) 607-0234

Email: sales@omcan.com

Website: www.omcan.com



Follow us to keep up to date with the latest news and offers



2020.E.O.E

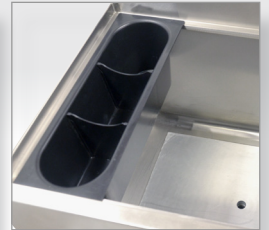
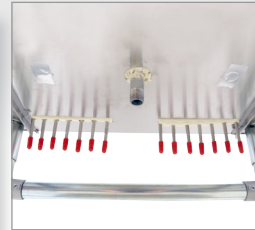
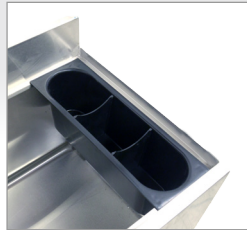
TABLES AND SINKS

24-INCH STAINLESS STEEL INSULATED ICE BIN



Comes with leg brace

DETAILED IMAGES



FEATURES

- with 7 Circuit Post-Mix Cold Plate
- 20-gauge 304 stainless steel bowl, top, back and body
- Galvanized leg and socket, plastic bullet feet and "U" shape leg bracing
- Comes with aluminum cold plate with stainless steel tubing circuits
- Plastic bottle holder included
- 3" high backsplash

TECHNICAL SPECIFICATIONS

ITEM
CAPACITY
BOWL SIZE
DIMENSIONS (DWH)
WEIGHT
GROSS DIMENSIONS
GROSS WEIGHT

43477
77 lbs. / 34.9 kg.
22" x 14.8" x 12" / 558.8 x 375.92 x 304.8 mm
24" x 18.5" x 33" / 609.6 x 469.9 x 838.2 mm
91.3 lbs. / 41.4 kg.
24" x 18.5" x 33" / 609.6 x 469.9 x 838.2 mm
108.9 lbs. / 49.4 kg.

OPTIONAL ACCESSORIES



Item **44622** - Sliding Cover
Dimensions: 16.5" x 23.5"



Item **44625** - Stainless Steel Leg
Brace for 18" x 24" Ice Bins



Item **44624** - 14" Stainless
Steel Legs for Ice Bins

OMCAN INC.

Telephone: 1-800-465-0234
Fax: (905) 607-0234
Email: sales@omcan.com
Website: www.omcan.com



Follow us to keep up to date with the latest news and offers



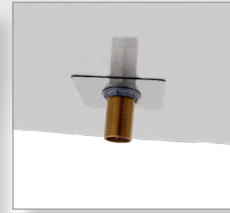
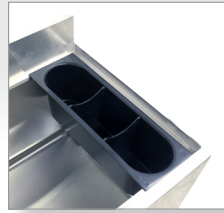
TABLES AND SINKS

36-INCH STAINLESS STEEL ICE BIN



Comes with leg brace

DETAILED IMAGES



FEATURES

- 20-gauge 304 stainless steel bowl, top, back and body
- Galvanized leg and socket, plastic bullet feet and "U" shape leg bracing
- Plastic bottle holder included
- 3" high backsplash

TECHNICAL SPECIFICATIONS

ITEM	43476
CAPACITY	119 lbs. / 54 kg.
BOWL SIZE	34" x 14.8" x 12" / 863.6 x 375.92 x 304.8 mm
DIMENSIONS (DWH)	36" x 18.5" x 33" / 914.4 x 469.9 x 838.2 mm
WEIGHT	77.1 lbs. / 35 kg.
GROSS DIMENSIONS	36" x 18" x 33" / 914.4 x 457.2 x 838.2 mm
GROSS WEIGHT	79.2 lbs. / 36 kg.

OPTIONAL ACCESSORIES



Item **44623** - Sliding Cover
Dimensions: 16.5" x 35.5"



Item **44626** - Stainless Steel Leg
Brace for 18" x 36" Ice Bins



Item **44624** - 14" Stainless
Steel Legs for Ice Bins

OMCAN INC.

Telephone: 1-800-465-0234

Fax: (905) 607-0234

Email: sales@omcan.com

Website: www.omcan.com



Follow us to keep up to date with the latest news and offers



2020.E.O.E

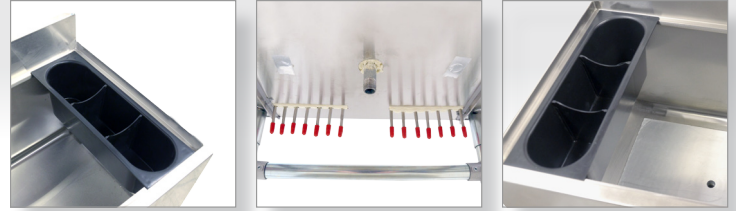
TABLES AND SINKS

36-INCH STAINLESS STEEL INSULATED ICE BIN



Comes with leg brace

DETAILED IMAGES



FEATURES

- with 7 Circuit Post-Mix Cold Plate
- 20-gauge 304 stainless steel bowl, top, back and body
- Galvanized leg and socket, plastic bullet feet and "U" shape leg bracing
- Comes with aluminum cold plate with stainless steel tubing circuits
- Plastic bottle holder included
- 3" high backsplash

TECHNICAL SPECIFICATIONS

ITEM	43478
CAPACITY	119 lbs. / 54 kg.
BOWL SIZE	34" x 14.8" x 12" / 863.6 x 375.92 x 304.8 mm
DIMENSIONS (DWH)	36" x 18.5" x 33" / 914.4 x 469.9 x 838.2 mm
WEIGHT	134.4 lbs. / 60.1 kg.
GROSS DIMENSIONS	36" x 18.5" x 33" / 914.4 x 469.9 x 838.2 mm
GROSS WEIGHT	156.2 lbs. / 70.85 kg.

OPTIONAL ACCESSORIES



Item **44623** - Sliding Cover
Dimensions: 16.5" x 35.5"



Item **44626** - Stainless Steel Leg
Brace for 18" x 36" Ice Bins



Item **44624** - 14" Stainless
Steel Legs for Ice Bins

OMCAN INC.

Telephone: 1-800-465-0234
 Fax: (905) 607-0234
 Email: sales@omcan.com
 Website: www.omcan.com

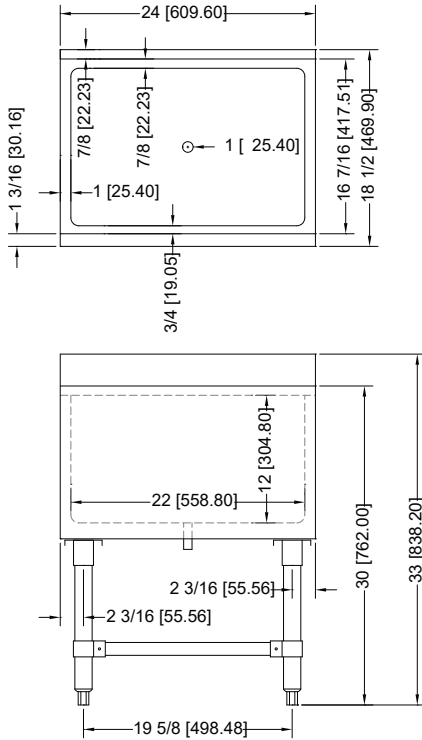


Follow us to keep up to date with the latest news and offers

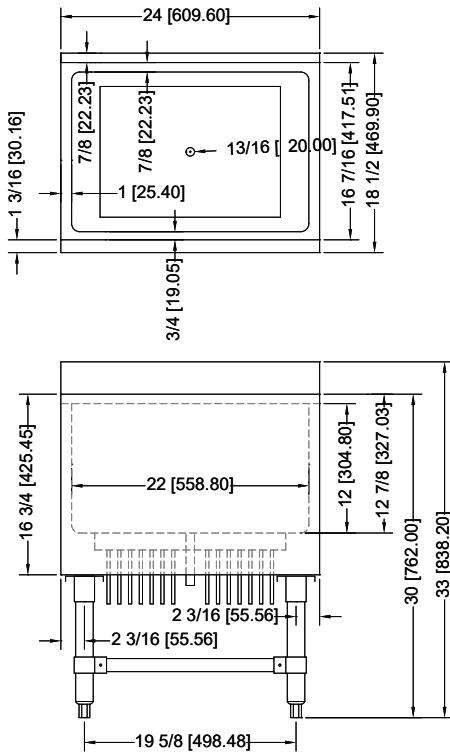
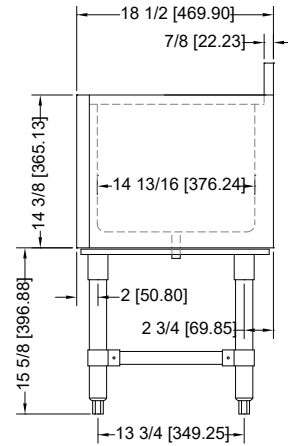


TABLES AND SINKS

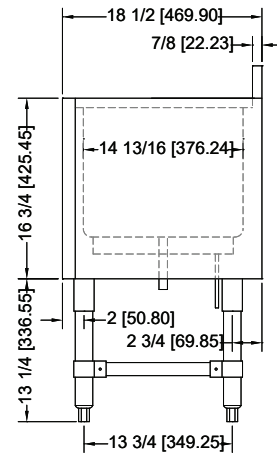
TECHNICAL DRAWINGS FOR ITEMS 43475 AND 43477



Item 43475



Item 43477



OMCAN INC.

Telephone: 1-800-465-0234

Fax: (905) 607-0234

Email: sales@omcan.com

Website: www.omcan.com

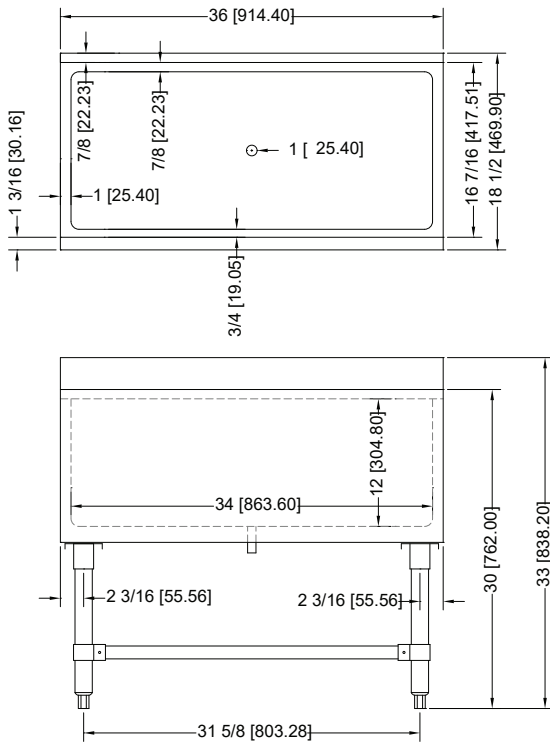


Follow us to keep up to date with the latest news and offers

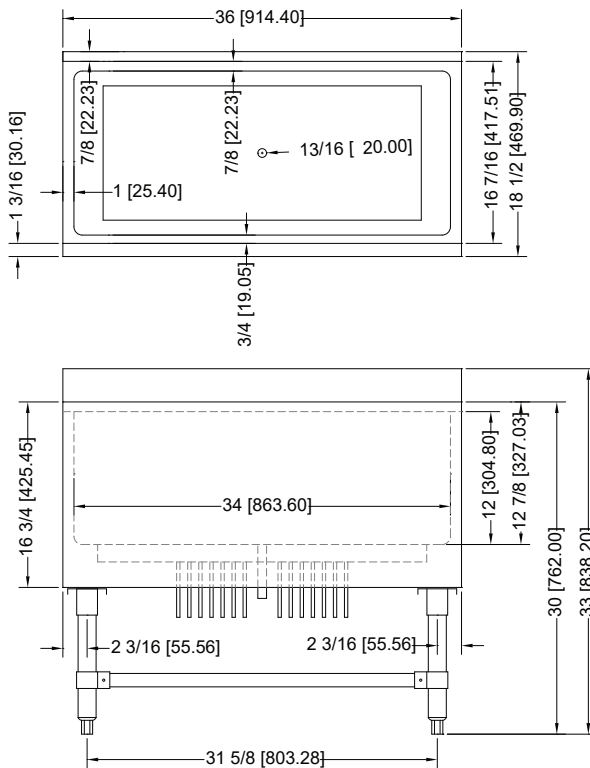
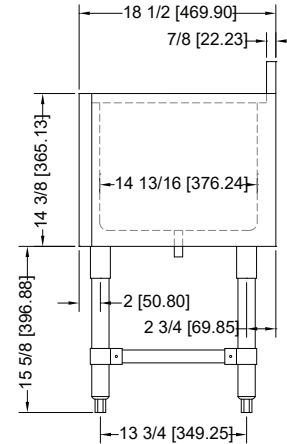


TABLES AND SINKS

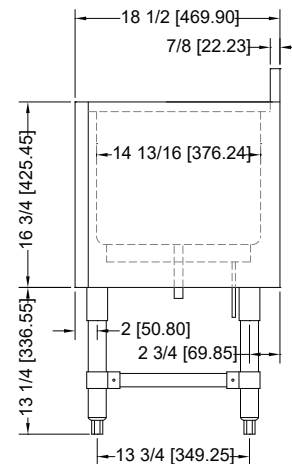
TECHNICAL DRAWINGS FOR ITEMS 43476 AND 43478



Item 43476



Item 43478



OMCAN INC.

Telephone: 1-800-465-0234

Fax: (905) 607-0234

Email: sales@omcan.com

Website: www.omcan.com



Follow us to keep up to date with the latest news and offers

